

Injection Date : Tue, 10. Oct. 2023
Seq Line : 24
Location : 17
Inj. Vol. : 2 µl

Acq. Method : C:\Users\Public\Documents\ChemStation\1\Data\SE10OCT 2023-10-10
08-36-32\22010446C LCMS-6#.M

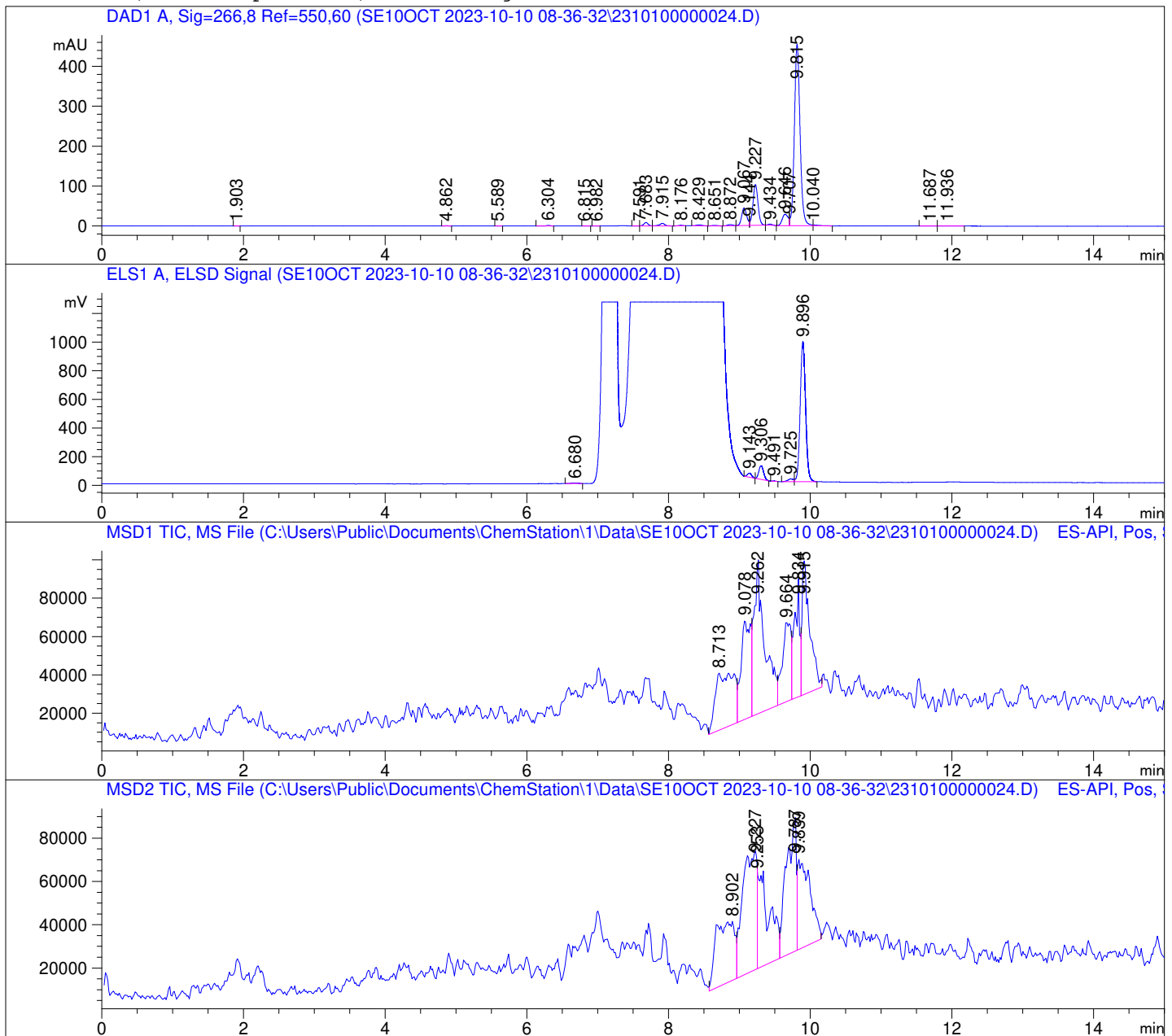
Analysis Method : C:\Users\Public\Documents\ChemStation\1\Data\SE10OCT 2023-10-10
08-36-32\22010446C LCMS-6#.M (Sequence Method)

Waters XBridge BEH Amide (4.6 x 150 mm, 2.5 µm); PN# 186006726

Mobile Phase A: 20mM Ammonium Acetate (aq) pH 8.2

Mobile Phase B: AcN

Mobile Phase A / Mobile Phase B: 5/95 (0 min) --> (10 min) --> 60/40 (5 min); Flow:
1.0 ml/min; MSD1 = positive; MSD2 = negative



DAD1 A, Sig=266,8 Ref=550,60

Peak #	Ret. Time [min]	Area [mV *s]	Area %
1	1.903	0.368	0.010
2	4.862	2.198	0.062
3	5.589	0.600	0.017
4	6.304	5.552	0.156
5	6.815	0.152	0.004
6	6.982	0.301	0.008
7	7.591	0.721	0.020
8	7.683	36.404	1.023
9	7.915	33.325	0.936
10	8.176	4.990	0.140
11	8.429	11.643	0.327
12	8.651	6.588	0.185
13	8.872	13.164	0.370
14	9.067	215.792	6.064
15	9.144	1.183	0.033
16	9.227	501.767	14.101
17	9.434	11.464	0.322
18	9.646	164.716	4.629
19	9.707	1.716	0.048
20	9.815	2533.975	71.210
21	10.040	10.149	0.285
22	11.687	0.894	0.025
23	11.936	0.774	0.022

ELS1 A, ELSD Signal

Peak #	Ret. Time [min]	Area [mV *s]	Area %
1	6.680	33.258	0.564
2	9.143	124.319	2.110
3	9.306	448.461	7.611
4	9.491	6.066	0.103
5	9.725	109.876	1.865
6	9.896	5170.511	87.747

